

Message from the Shire President (cont)

Congratulations are also due to our 2015 Citizen of the Year, Dorothea Hansen-Knarhoi, who was inducted into the WA Women's Hall of Fame in March in recognition of over 40 years volunteer service and support for the Art Gallery of Western Australia. Well done, Dorothea.

In late March the Shire commenced a new waste system with the introduction of a lime-green lid organics bin (GO bin) for garden waste and a red lid bin for general waste. The Shire is committed to, not only improving waste services to its residents, but also implementing sustainability initiatives to reduce the Shire's carbon footprint and impact on the environment.

The new GO bin will divert green waste from landfill with the contents converted to mulch. We are also installing 100kw of solar panels onto the roof of The Grove. We anticipate that this will save

an estimated \$30,000 in electricity costs per year and reduce CO2 greenhouse gas emissions by over 100,000kg per year.

We will soon be commencing a review of the Shire's Strategic Community Plan. The Strategic Community Plan is compiled following consultation with residents and takes a long-term view of the community's objectives and expectations within available finances. The Plan will provide guidance to the Council on the community's priorities and the allocation of resources.

On behalf of councillors and staff, I wish all residents and their families a safe and healthy journey through these difficult times.

Best wishes,
Cr Rachel Thomas | Shire President

COVID-19 assistance package

Council is not only aware of the potential health impacts of COVID-19, but also the financial impact this will have on some residents and ratepayers. At the April Council meeting, a number of measures were adopted by Council to provide assistance to small businesses and ratepayers in the Shire.

For the balance of this financial year to 30 June, Council is offering immediate support for small businesses affected by Government closures and includes the refund of food license fees and a refund of rates for the period 1 April to 30 June. Other businesses affected may be eligible for a 30% rates refund, subject to eligibility under the Shire's Financial Hardship Policy (COVID-19). Support is also being provided to the Peppermint Grove Tennis Club and Westcoast Community Centre, with the waiving of lease fees and charges. For residential properties, Council has suspended interest charges on overdue rates to 30 June.

As part of the 2020/21 budget process, Council is looking at extending the rates support for small businesses to 30 September and extending the support to the Tennis Club and Westcoast Community Centre through to 31 December. Council will also be looking at suspending interest rate charges and instalment administration fees for rates for the financial year. In order to activate the local economy, the Shire will refund 50% of building license fees for applications submitted by 31 December and work substantially commenced within 6 months.

Council is committed to having a zero increase in rates raised in 2020/21 compared to 2019/20. The upcoming financial year is a rate revaluation year for all metropolitan local governments. Gross Rental Valuations (GRV) are set by Landgate, a state government agency. With a revaluation, each property has a rental value assessed on what a fair market annual rental would be.

The revaluation has shown that GRV's across Perth have had a reduction. Council therefore adjusts the rate in the dollar it applies across all properties to achieve the same rate revenue as this current financial year. In a revaluation year, there can be individual property movements outside of the average, so although Council is committed to a zero-revenue increase, some properties may have a rate increase above last year's rates, and some will be less than last year's rates. More information of the revaluation will be included with your rate notice.

For more of the Shire's COVID-19 Assistance Package and Financial Hardship Policy (COVID-19), please visit our website, www.peppermintgrove.wa.gov.au

Cottesloe Village - Fresh Research Offers Insights

The combined focus of the Shire of Peppermint Grove and the Town of Cottesloe is delivering some keen insights into the way we live in our neighbourhood, as well as the likely future form and lifestyle for the commercial Cottesloe centre area "Our Cott Village".

This work is fresh and tells us about the centre as it is now, its people, businesses and preferences for how the centre is part of the special Cottesloe lifestyle.

Toward the end of last year, several specialist consultant reports completed research to tell us about the following aspects of living near, working in and operating businesses in the Cottesloe centre:-

- Economic and business life
- Access and movement
- Urban design assessment
- Community values and preferences

The community values and preferences work was undertaken by Curtin University and involved small focus group sessions and interviews.

This work considered the Activity Centre study area and moreover the surrounding neighbourhood – we want to define how Cott Village will function and be developed into the future, and also how it might look.

Copies of the reports are on the Shire website for public review and comment. The Shire has already received several responses from residents and businesses keen to get on board for future workshop stages of the project (due later this year).

The interest received from business operators is consistent with the findings of research into the centre and employment, and local focus on doing things well.

High quality is one of the values identified for the centre, and this can be manifest not just in the goods and services, but also the finish and design of buildings, the experience obtained from walking through streets and laneways and an overall sense that the centre is a vibrant yet dignified place with its own sense of identity.

The amount of income per capita for the broader area of Cottesloe is much larger than for the overall Perth metropolitan region. This can provide better insight into which types of business and goods and services might be able to locate and prosper in the Cott Village.

Other key issues identified include the low quality of walking possible throughout the centre. Footpaths and public spaces need to be improved to provide space for walking, mobility aids facilitated and ample space for public seating, shade trees and other important features.

The range of businesses in the centre offer a variety of goods and services. Research suggests scope for further growth potential for niche activities, tourist and night economy businesses.

There is a need to do a lot better with public transport. The quality of surroundings for the bus stops and the Cottesloe Railway station is rated as poor. Security and convenience of access is rated moderate to low by the community survey. The impact of traffic volumes along Stirling Highway, Jarrad Street and Curtin Avenue has also been found to make an unfortunate impact on the Cott Village with pedestrians being put to difficulty just to walk several hundred metres between the shopping precincts.

Next steps in the project will examine sub precincts in finer grain and detail and consider which of the possible redevelopment sites are likely to be influential as part of creating the necessary transformation of improvement for Cott Village. A greater sense of partnership with other organisations will ensure improvements can be made across boundaries with the overall vision for the centre in mind.

We need to maintain a sense of excitement and great possibility when we examine future development opportunities. Designers may be invited to submit ideas-based solutions for the Centre as part of a re-imagining of Cottesloe Centre to grow further into a place for people who seek a relaxed, healthy and active lifestyle close to their home, family and friends.

In January, the Shire contacted residents and businesses in a letter drop – briefing them about the project, directing them to the research documents and inviting responses about the project.

Despite the disruption to business caused by the COVID19 emergency, we already have a number of our early respondents expressing their interest to join with us on the next steps for the centre and its role. The Shire hopes property owners, business owners and managers and others can be inspired to develop and then roll out a program of quality improvement across the centre, and to reimagine Cott Village, bit by bit and from the ground up.

Despite the economic setbacks, our further work can offer Cott Village and its businesses some positive and focussed direction as a way to rebuild and improve the community experience and to build support for a re-invigorated local centre.

Shire of Peppermint Grove

Shire Office, 1 Leake Street, Peppermint Grove
PO Box 221, Cottesloe WA 6911

Office Hours: 8.30am - 5pm Monday to Friday

Telephone: 9286 8600

Email: admin@peppermintgrove.wa.gov.au

This publication and all other Shire publications are available in alternative formats on request. The information provided within PepTalk is also available on the Shire's website at

www.peppermintgrove.wa.gov.au

This publication is printed on paper that contains recycled content.



Cr Charles Hahnen (Deputy), Cr Peter Macintosh, Mr Don Burnett (CEO), Cr Greg Peters, Cr Rachel Thomas (President), Cr Patrick Dawkins, Cr Dawne Horrex, Cr Karen Farley.

PepTalk

May 2020 Newsletter
www.peppermintgrove.wa.gov.au

Message from the Shire President

Welcome to the Autumn edition of Peptalk



COVID-19 has affected our world dramatically in recent months requiring us all to change our ways of working and socialising.

At our April Council Meeting, we looked at policy options that could provide support to small businesses in the Shire that have been closed or restricted by the measures introduced by State government to combat the pandemic. We also adopted a hardship policy for ratepayers who may need assistance in paying their rates in the coming months. More information on the assistance package is in this edition of PepTalk and detailed on the Shire's website at www.peppermintgrove.wa.gov.au.

Whilst much of our focus has been on adapting to new ways of working and providing services to residents,

I would like to draw your attention to other news from recent months.

The 2020 Combined Councils' Australia Day ceremony was hosted by the Town of Cottesloe with residents enjoying beautiful weather and glorious views over the Indian Ocean. I was delighted to welcome five new citizens to the Shire and to present the Shire's Citizen of the Year Award to Gavin Bunning AO. Over many years Gavin has given his time, energy and commitment to a wide range of community groups and charitable organisations in education, aged care, conservation and the arts. Thank you, Gavin, for your hard work and dedication to the service of others and congratulations on this Award.

Continued inside.

Inside this Edition

A message from the Shire President

COVID-19 assistance package

SHINE community services

The Grove Library

Changes to waste services

Local Native Plant Subsidy Scheme

LED Speed Signs

Opening Hours Extended at West Metro Recycling Centre

Our Cott Village



SHINE Community Services is here to assist in a time of need

SHINE Community Services is your local not-for-profit aged care support service here to assist aged residents in this time of need and self-isolation.

Operating in the Western Suburbs of Perth for over 39 years, SHINE continues to offer a range of in-home support services to aged care residents with the support of the Towns of Cottesloe, Mosman Park, Claremont and the Shire of Peppermint Grove and is an Australian Government approved provider of Home Care Packages.

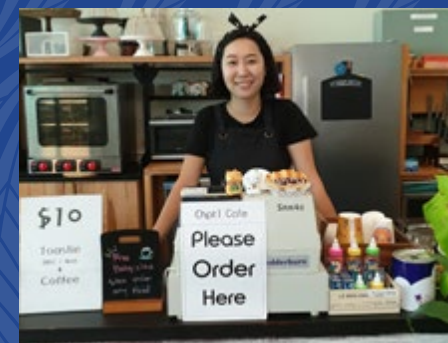
Self-isolation is a new and challenging concept for all members of our community, but we must consider and prioritise the needs of our aged neighbours and relatives. At times like this, it is important that we all take responsibility to share the availability of support services like SHINE Community Services for people in need of additional support due to their frailty or health conditions.

SHINE provides a large range of vital support services, including;

- assisting with the purchase of groceries and essential items,
- social visiting services,
- regular phone calls to aged residents to check on their health and general well-being,
- transport to essential medical appointments,
- home cleaning services,
- meal preparation,
- showering and medication prompting.

SHINE's dedicated team of health care workers are committed to delivering safe and quality care services, trained in infection control, hand hygiene and use of personal protective equipment to protect themselves and others. The team is regularly updated on the coronavirus COVID-19 developments and meets the regulatory requirements of the Department of Health.

For further information on how SHINE Community Services can assist you or an aged member of your local community, please phone **(08) 9253 5555** or email reception@shinecs.com.au.



Under New Management- Café Chpt 1

Chpt 1 Café, located adjacent to The Grove Library, is now under new management.

New lessee, Choi is an experienced barista and wonderful chef but has had to close during this period of time. She looks forward to meeting you and will be open for business once The Grove Precinct is back up and running again.

Let's save the trees - get your mail electronically

Have your Peptalk, Rates Notice, Library Notices or any other publication from the Shire of Peppermint Grove delivered by email OR check out our website for information at

www.peppermintgrove.wa.gov.au

To receive future copies of Shire publications, including Peptalk via email, please send an email to cdo@peppermintgrove.wa.gov.au with PUBLICATIONS in the subject line and the following details: Your name, physical address.

Opening Hours Extended at West Metro Recycling Centre

In order to service the increasing demand, West Metro Recycling Centre have extended their opening hours. These new opening times mostly affect the weekend service which jumps from six to sixteen hours.

Please see the new extended hours below and to find out what you can recycle, visit the website at

www.wmrc.wa.gov.au

E-X-T-E-N-D-E-D TRADING HOURS!

Weekdays: 7:30am - 4pm
Weekends: 8am - 4pm
Public Holidays: 7:30am - 2pm
Only closed Christmas Day,
New Year's Day & Good Friday.



THE grove LEADING. LEARNING. LIVING.

The Grove Library
1 Leake Street
(adjacent to the Council Office)
9286 8686
www.thegrovelibrary.net

The Grove Library Hours
Monday – Thursday 9am – 6pm
Friday 9am – 5pm
Saturday 10am – 4pm
Sunday 12noon – 4pm

Join Our Email List

Get advance notice of new books and upcoming events for adults by sending a request to library@thegrovelibrary.com

Welcome back to the Grove Library!

We have resumed regular opening hours.



Please note:

- Due to the limits on numbers of customers who can come into the library, there may be times when you will have to wait to enter.
- Please limit your visit to one hour maximum. We will assist you to browse and borrow all you need in that time.
- Please feel free to make use of our on-line catalogue to browse and reserve items bit.ly/grovecat
- Home delivery will still be available to those who are housebound or self-isolating.
- There will be limited computer facilities for essential purposes such as work and training. Please phone the library to confirm availability on 9286 8686.
- All returned library items will be quarantined for 48 hours, to ensure safety.
- Baby and toddler programs will restart when safety standards can be assured. Let us know if you would like to be notified by sending us an email to library@thegrovelibrary.com
- New safety measures include providing hand sanitiser, plexiglass screens, additional cleaning, and space markers for social distancing.

We look forward to welcoming you back to your library.

Join Your Library Online

Join the library online and create an electronic membership.

This can then be used to borrow eBooks and access our other online resources these include:

- eBooks and eAudiobooks from Bolinda BorrowBox and OverDrive
- eMagazines from RbDigital
- Online databases and learning tools including Road to IELTS and Transparent Language

To complete your membership and obtain a library card so you can borrow physical items, please ring the library on 9286 8686 between Monday to Friday 9.00am – 5.00pm.

New Website Launch

Our current website is 10 years old and showing its age.

So out with the old and in with the new.

Our redesigned website will have an updated look and feel, greater accessibility and convenience, and will be mobile responsive.

Launching Late May 2020



Stay safe, make sure you have your flu shot and download the Covidsafe app



Did you know?

- The Shire of Peppermint Grove's street sweeping day is the first Tuesday of each month? To enable the sweeper to do a more thorough job, residents are requested where possible not to leave cars parked in the street on that day.
- You can dispose of household hazardous waste for free? For more information on the Household Hazardous Waste Program or to see which materials are accepted, visit the metro recycling centre at www.wmrc.wa.gov.au
- You can secure your dinghy on the river foreshore in the Shire's designated storage area? There are a limited number of vacant bays available now (registrations run to 31 December 2020) – please contact the Shire on 9286 8600 for more information on fees and conditions.

Local Native Plant Subsidy Scheme

During May, APACE Nursery in North Fremantle will again be offering their **HALF PRICE** plants to residents of Peppermint Grove.

This year, a "click and collect" service is on offer; a 20-Plant Variety Pack will be lovingly curated by an APACE staff member for just \$1.75 per plant, and you will be allocated a time-slot to collect your plants.

To maintain appropriate public health rules, only staff can make up packs.

HOW TO GET:

- Visit the APACE website at apacewa.org.au and look for May 2020 Residents Plant Sale to place your order.
- Book your preferred collection time (essential to ensure social distancing).
- You will receive a reminder by text or email when your plant packs are ready.
- Take your leaf babies home and get planting!

IMPORTANT:

- Bring a screenshot/print out of your receipt & ID (eg Drivers' License, utility bill) so we can match your purchase.
- To minimise public health risks, please remain in your car when collecting - let APACE staff do the running.
- For any queries, send us a message or email admin@apacewa.org.au
- Scheme will run throughout May or while stocks last.

Changes to waste services in Peppermint Grove



By now, all single residential properties will have received their new lime green lid garden organics (GO) bin and a new red lid waste bin to replace the old dark green bin.

Along with the yellow lid recycling bin, each single resident property now has a minimum of three bins.

With the introduction of the separate garden organics collection, this three-bin system will reduce waste to landfill. Garden prunings and clippings are collected in your garden organics bin and will be taken to the West Metro Recycling Centre where they are stockpiled and collected to be processed into mulch and compost. This mulch is available free of charge to Peppermint Grove residents.

For any waste-related advice or assistance, please call the WMRC Recycling Hotline 9384 6711 and for any further waste wise tips and workshops, www.wmrc.wa.gov.au/education/waste-watchers

LED Speed Signs



The Shire recently installed solar powered LED speed signs in View and Leake Streets. These devices measure, then clearly display each vehicle's speed as it approaches the unit.

Whilst the majority of drivers adhere to the limit in Peppermint Grove, regrettably some continue to speed through our quiet streets and these signs will hopefully discourage this irresponsible behaviour.