

# Carols by Candlelight 2025

Sunday, December 7, marked yet another successful event at Manners Hill Park, where hundreds of residents came together to enjoy a delightful evening of family picnics, raffles, music, and carolling.

The festivities began with captivating bagpipe performances by Zoe Neave from PLC and Benji Landau from Scotch College, followed by an inspiring opening prayer delivered by Reverend Sam Song.

The evening flowed seamlessly under the guidance of our talented MC, Jenny Simpson, as the Mighty Camelot Choir and the Balga Community Band enchanted the audience with a selection of beloved Christmas carols.

As always, our raffle tables were filled with an impressive array of prizes, sourced by Penny Askin, the Community Services Officer at the Shire. Sets of three raffle tickets

were sold for \$10, resulting in excited lines of eager ticket buyers.

We are thrilled to announce that the event raised an impressive total of \$5,641 for The Salvation Army's Balga Early Learning Centre, with all funds going directly to support children and families in need.

A heartfelt thank you goes out to all the local businesses for their generous contributions of quality prizes, and to our remarkable Peppermint Grove community for your unwavering support.



Residents Unwinding



Raffle Prizes

# Shire Special Registration Plates

If you missed out on purchasing the Shire's special registration plates auctioned in 2025, the 2026 sale will soon be open. From 1 June, you will be able to purchase a set of special Shire plates, subject to number availability. You can purchase more than one set per household as long as they are being fitted to a vehicle.



To register your interest, please email [penny.askin@peppermintgrove.wa.gov.au](mailto:penny.askin@peppermintgrove.wa.gov.au).

On Monday 1 June, you will receive an email confirming that registrations are open, after which you may lodge your preferred plate number.

Allocation will be processed on a 'first in, first allocated' basis from the emails received on 1 June. The cost per set (front & back) is **\$440 (including GST)**.

Orders can be placed at any time throughout June, with the round closing 5pm Tuesday 30 June.

Any available number **up to and including 999** may be purchased.

The following numbers were sold in the first round and are **not available**:

**000, 00, 0, 1, 2, 3, 4, 5, 6, 7, 8, 9, 10, 13, 15, 16, 20, 23, 33, 39, 51, 52, 69, 72, 86, 88, 100, 101, 102, 103, 104, 105, 106, 107, 108, 109, 666, 777, 888.**



## Native Plant Subsidy Scheme

May 1st – May 30th 2026

\$3.00 each from APACE Nursery, 1 Johannah Street, North Fremantle. Tuesday-Saturday: 8:30am-2.30pm.

Plants available during the month of May while stocks last.

Check the APACE WA website for details and available species and stock.

Limit of 40 plants per residence and proof of residence required. [pacewa.org.au](http://pacewa.org.au)

## Building Application Information Sheet

The Shire has created an information sheet for Building Applications to help applicants navigate the building approval process.

This resource aims to streamline the determination of building applications by enhancing the quality of submissions by clearly outlining the requirements for applications.

For residential construction, it is also recommended that the information sheet for Residential Development be reviewed as it identifies the nuances of the local planning policy framework and helps applicants navigate the planning approval process.

Our Development Services staff are also available to offer additional assistance and advice.

## Roadworks projects

Leake Street & The Esplanade

Under a joint funding arrangement with Main Roads WA, the Shire of Peppermint Grove have undertaken two significant road rehabilitation projects this year.

The first project involves a section of **The Esplanade**, running north between **Leake Street** and **Bindaring Parade**. Works include road resurfacing, kerb replacement, and drainage improvements.

The second project is at the **western end of Leake Street**, directly outside the Shire's Administration Building and Cottesloe Central Shopping Centre. Due to the high volume of daily traffic along Stirling Highway and the need to maintain access to the shopping centre carpark, these works were undertaken at night to minimise disruption around this busy intersection.

While every effort will be made to minimise disruption, some inconvenience is unavoidable due to the nature of the works. The Shire appreciates your patience and understanding during this time.

## Manager of Infrastructure change at the Shire

After 12 years with the Shire, the Shire's Manager of Infrastructure Services, Donovan Norgard has retired. Donovan provided invaluable service to the community and was widely respected and well liked.

The Shire wishes Donovan all the best in his retirement. Darren McBride has been appointed as his replacement, bringing extensive local government and industry experience.



Dono's farewell



Darren McBride

### Shire of Peppermint Grove

Shire Office, 1 Leake Street, Peppermint Grove  
PO Box 221, Cottesloe WA 6911

**Office Hours:** 8.30am - 4.30pm Monday to Friday  
**Cashier Hours:** 9.00am - 4.15pm Monday to Friday

**Telephone:** 9286 8600

**Email:** [admin@peppermintgrove.wa.gov.au](mailto:admin@peppermintgrove.wa.gov.au)

This publication and all other Shire publications are available in alternative formats on request.

The information provided within PepTalk is also available on the Shire's website at

[www.peppermintgrove.wa.gov.au](http://www.peppermintgrove.wa.gov.au)

*This publication is printed on paper that contains recycled content.*



## Message from the Shire President

In the December 2025 edition of Peptalk, I reported on the announcement by Minister Cary's requirement for residential infill within an 800m radius of 10 train stations in the metropolitan area.

The Cottesloe and Mosman Park stations impact the Shire. The Shire and the Town of Cottesloe have been working on the Cottesloe Village Precinct Plan, that will see a higher dwelling density in this precinct along Stirling Highway. Council is also, as part of our Local Planning Review, looking at increasing density along the rest of Stirling Highway, scaling back several lots from the Highway.

The Shire's density proposal will see the number of proposed dwellings far exceed the State Governments required density increase. This will also negate the need to apply a blanket upcoding across the Shire using the 800m proposal. Council is also working on a joint proposal to the WA Planning Commission with the Towns of Cottesloe, Claremont and Mosman Park, suggesting each local government has a better planning outcome for infill, rather than a blanket 800m circle on maps.

The issue of amalgamation has been raised again by the Minister for Local Government. This has come about due to issues at the City of Nedlands, particularly regarding financial management and asset renewal.

Council doesn't believe there needs to be another round of discussions

over amalgamation, however if required, will attend meetings to discuss. On the subject of asset renewal, a number of residents would have been impacted by the Leake Street and The Esplanade roadworks. I apologise for any inconvenience; however the Shire's road network is our most significant infrastructure asset. The Shire has a rolling 10-year road program to ensure that our road network is maintained to a high standard and that funds are provided annually for these works to occur.

I congratulate Poppy Mahon, the Shire's current Young Citizen of the Year on her campaign to have second generation anticoagulant rodenticides removed from public sale. The groundswell of support for this campaign has seen these poisons removed from retailers' shelves for sale to the public.

Nominations closed 10th February for the Shire of Peppermint Grove's Extraordinary Election. I congratulate David Singleton who was elected unopposed and was sworn in at a meeting held 24 February.

**Best Wishes  
Cr Karen Farley SC  
Shire President.**



## Inside this edition

Carols by Candlelight 2025



Second Release

History of The Boatsheds

VEOLIA customer helpline for bins

Dinghy Bay Hire

The Grove Library

Meet your Councillors

Draft Garden Shire Public Health Plan

Did you know...

Native Plant Subsidy Scheme

Building Application Information Sheet

Roadworks Projects

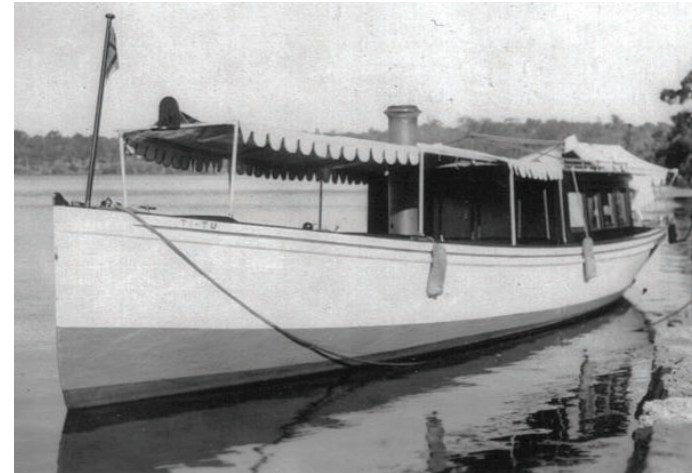
Manager of Infrastructure change at the Shire



## History of The Boatsheds

The headland at Keane's Point – now headquarters of the Royal Freshwater Bay Yacht Club was the site of many crabbing and small picnic parties as early as the 1850's.

It became an increasingly popular location on the river for both competitive and recreational sailing and boating of all kinds. By the 1920s, steamers were bringing holiday makers, either from Claremont or direct from Perth to what was becoming known as "the destination of choice".



Steam launch Ti-Tu moored at Royal Freshwater Bay. Ti-Tu is recognised as one of the oldest luxury pleasure launches in Australia and has a rich history associated with significant figures in WA.

From the early twentieth century significant public figures began building their own private boatsheds for transport and recreational purposes. Boatshed, No. 41, was built by Septimus Burt in 1905 to house his steam launch boat, Ti-Tu. The second, No. 42, was constructed in the same year by Augustus Roe and Talbot Hobbs. The third (closest to Keane's Point) was built by Richard Strelitz around 1913. When Doy Forrest purchased St Just, he also assumed ownership of the Strelitz boatshed, and it became known as the Doy Forrest Boatshed.

The three boatsheds and two jetties remain in private ownership and are significant and prominent landmarks on the Swan River.

## Dinghy Bay Hire

The Shire has a limited number of dinghy bays available for hire at the foreshore.

The annual hire fee is **\$215**, with registrations running from **1 January to 31 December** each year.

All registered dinghies must display the **2026 fluorescent green rig tag**, which must be clearly visible on the vessel at all times. The foreshore area is regularly patrolled to identify and manage any unregistered or unauthorised vessels.

Please note that you do not need to be a resident of Peppermint Grove to hire a dinghy bay.

For all enquiries, please contact **Penny on 9286 8620**.



## VEOLIA customer helpline for bins

For all standard bin-related enquiries, contact **Veolia Customer Helpline 1300 028 544**.

This process is in place to avoid double handling of requests.

### Veolia can assist with:

- Missed bin collections (these must be reported before Friday)
- Replacement bins (only when the body of the bin is split)
- Repairs to wheels, axles, lids, and lid pins
- Stickers left on bin lids relating to contamination, overweight bins, or overfull bins

### Contact the Shire only if you require:

- Additional bins
- Removal of additional bins

Requests for additional or removal of additional bins must be submitted via the **Additional Bin Request Form** available on the Shire website or by contacting the Shire's administration.

## Entry Statements



### 5 will be positioned around the Shire.

Tim and Rob from the depot alongside an entry statement

# THE grove

LEADING. LEARNING. LIVING.

### The Grove Library

1 Leake Street  
(adjacent to the Council Office)  
9286 8686

[www.thegrovelibrary.net](http://www.thegrovelibrary.net)

### The Grove Library Hours

Monday – Thursday 9am – 6pm  
Friday 9am – 5pm  
Saturday 10am – 4pm  
Sunday 12noon – 4pm

### Join Our Email List

Get advance notice of new books and upcoming events for adults by sending a request to: [library@thegrovelibrary.com](mailto:library@thegrovelibrary.com)

## Get ready for an epic winter break!



### July school holidays

This July 2026, your local library will be the place to be for non-stop excitement and creativity.

Whether you're building digital worlds in our high-energy Minecraft Workshop, sculpting unique masterpieces at Clay Craft, or challenging your friends during our 'Ultimate Gaming Afternoon', there is something for everyone. From tech-heads to artists, we've got your school holiday boredom sorted!

### Children's Book Week August 2026

The Grove will be inviting local schools to experience a **Symphony of Stories!** This year, the theme celebrates the harmonious blend of different voices, characters, and adventures that come together like a grand musical masterpiece.

Tune in for the greatest performance of the year! From the high-energy illustrations of **Kylie Howarth** to the rhythmic wonders of **Dr Rina Fu**, the enchanting worlds of **Gabriel Evans**, and the punchy visual storytelling of **Gavin Aung Than**, a new melody is beginning to play.



### Get Ready for Magic!

Our very own librarian Stewart is hitting the road for the **2026 Better Beginnings Program**, bringing the library's most spectacular stories directly to your classroom!

Expect high-energy storytelling, and a world of imagination delivered right to your doorstep. It's more than just reading—it's an adventure designed to spark a lifelong love of books.

Keep an eye out for Stewart's visit; your next favourite story is about to arrive!

### Unlock a World of Adventure at The Grove Library!

Is your child ready to swap "Are we there yet?" for "Just one more chapter?" The Grove Library's massive collection of **kids' graphic novels** is the ultimate destination for young explorers and secret superheroes.

From the high-stakes heroics of the **InvestiGators** to the relatable heart of **Smile**; our shelves are bursting with vibrant stories that turn even the most reluctant readers into book-loving fans.

Whether they're diving into a fantastical new world or laughing out loud at a hilarious series, the Grove has it all.



### Parents and carers join us for Rhyme Time at the Grove.

Rhyme Time is a fun, early literacy programme especially developed for children from birth to 2 years of age. There's always lots of singing, rhymes and reading. Stay afterwards and enjoy a coffee and chat with other grown-ups, with toys for the babies. This is a drop-in event...No bookings required.

### Baby Rhyme Time & Story Time details as follows:

**Where:** The Grove Library

**11 months of the year:** February through to December

**When:** Monday and Thursday

**Time:** 9.30am and 10.30am

**Running time:** 25 minutes

## Meet your Councillors



**Karen Farley SC**  
Shire President  
Term ends 2029



**Patrick Dawkins**  
Deputy Shire President  
Term ends 2029



**Charles Hohnen**  
Councillor  
Term ends 2029



**Peter Macintosh**  
Councillor  
Term ends 2027



**David Singleton**  
Councillor  
Term ends 2029



**Emerald Bond**  
Councillor  
Term ends 2027



**Jessamy Mahony**  
Councillor  
Term ends 2027

## Draft Garden Shire Public Health Plan - Open for Public Comment

The Shire of Peppermint Grove has a statutory responsibility to support its community in achieving healthier lifestyles.

The Garden Shire Public Health Plan (GSPHP), developed under the Integrated Planning and Reporting Framework, aligns with the State Public Health Plan to the Shire's Strategic and Corporate Business Plans. It provides a comprehensive approach to improving public health and wellbeing for all residents.

The GSPHP relies on collaboration with a diverse network of stakeholders, including regulators, policy makers, and local service providers. It will guide the allocation of resources for public health services and programs delivered across the Shire's civic facilities. Community input is essential to help shape the Plan's objectives, strategies, and measures. The GSPHP will take effect in 2026 and will be maintained as a living document for the following five years.

The draft GSPHP is now open for public comment and can be viewed, with submissions lodged, via the Shire's website: [www.peppermintgrove.wa.gov.au/consultations/](http://www.peppermintgrove.wa.gov.au/consultations/)

## Did you know...

**If you missed** the Shire's annual electors meeting in early February, the 2024/25 annual report is available on the Shire's website. Once again, the Shire had a clear audit report with no issues being raised by the auditor.

**Thanks to you...** photo donations received by the Community History Hub at The Grove library have been increasing this year! Our latest acquisitions will form part of the upcoming Heritage Festival photo exhibition at The Grove library from 18th April to 2nd May.

Pop into Community History at The Grove and see Sally if you have precious memories to preserve, and share.

**The Shire has Facebook and Instagram pages**, so you can now follow us for regular updates

**f Facebook**

[www.facebook.com/shireofpeppermintgrove](http://www.facebook.com/shireofpeppermintgrove)

**Instagram**

[www.instagram.com/shireofpeppermintgrove](http://www.instagram.com/shireofpeppermintgrove)